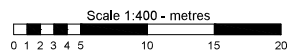


IAQ Map Legend - Winter Operation

- Natural ventilation: Operable windows and/or louvres should be used to manage fresh air, balancing thermal comfort and ventilation.
- Mechanical ventilation: Fresh air is introduced by the heating, ventilation and air conditioning system when in operation. Windows can remain closed and no action is required by the school.
- UV-C Lights: UV-C light units have been retrofitted to the air conditioning systems to neutralise airborne virus particles. In these rooms, the systems must be in operation when the room is occupied.

Note: White spaces are to be used in accordance with COVID-19 requirements and current health advice.

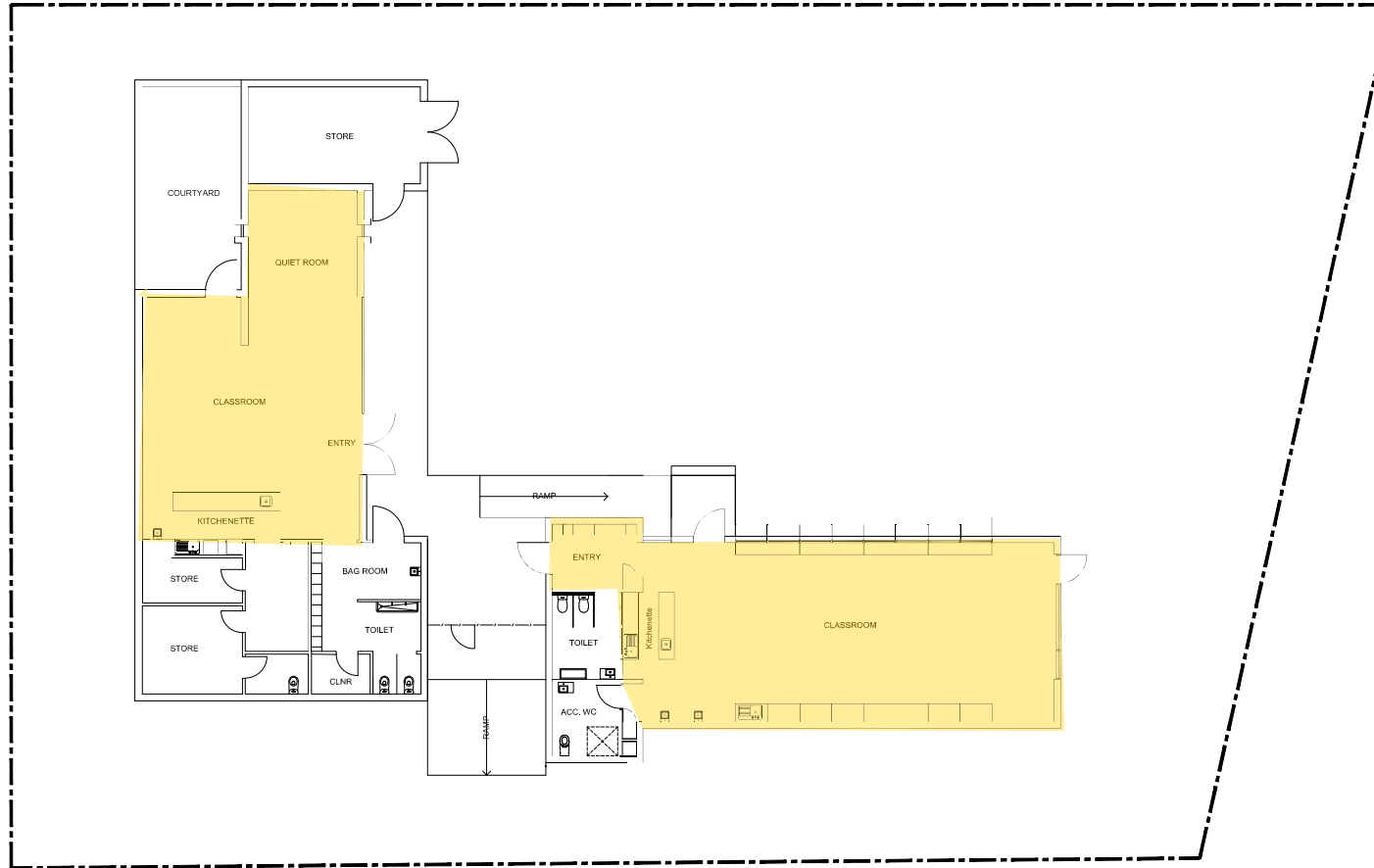
ISSUE	AMENDMENT	DRAWN	VERD	APP'D	DATE



SCALE
1:400
DATE
SEPT 2016
DRAWING SHEET SIZE = A3

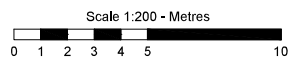


PROJECT
LATHAM PRIMARY SCHOOL
INFRASTRUCTURE & CAPITAL WORKS
SCHOOL LAYOUT PLAN



PRESCHOOL

ISSUE	AMENDMENT	DRAWN	VER'D	APP'D	DATE



SCALE
1:200
DATE
SEPT 2016
DRAWING SHEET SIZE = A3



PROJECT
LATHAM PRIMARY SCHOOL
INFRASTRUCTURE & CAPITAL WORKS
PRESCHOOL LAYOUT PLAN