

Our school values are introduced to the class and activities are based on these values:

Respect

Motivation

Collaboration

Resilience

Positivity



こんにちは

Konnichiwa

Daniel will be bringing Japanese culture to the LSU

Amanda will explore with the class Drama

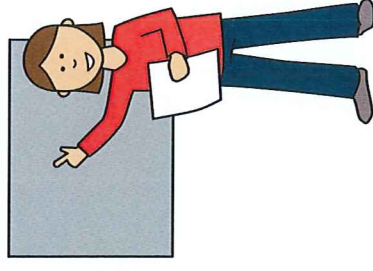


+ - x ÷ = Daily

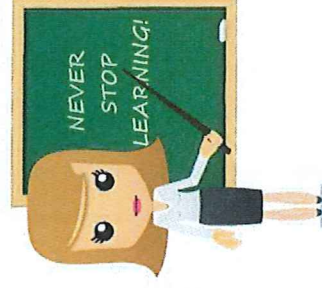
The LSU-A

Term 1
2017

Our teacher is Jan



Our LSAs are: Julie-Ann and Annette



Personal Care and Health

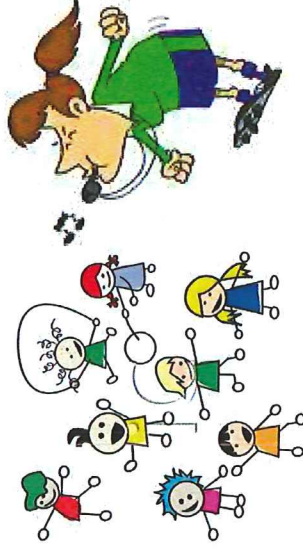
Both LSU classes are coming together to experience

‘what makes a healthy snack?’

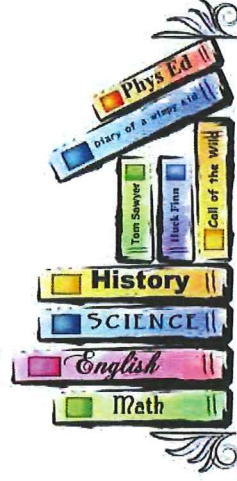
By investigating healthy afternoon snack options



At Latham we have Sally as our new PE teacher



Every Thursday afternoon we visit our school library and choose from a vast selection of fiction and non-fiction books



Students have their own tub of books which are both fiction and non-fiction for them to read as they come into class after each break

For Science we will be looking at

‘Spiders versus Insects’

The LSU have the privilege of being the colour party for Latham. Each day we raise and lower the flags in a solemn and dignified manner

